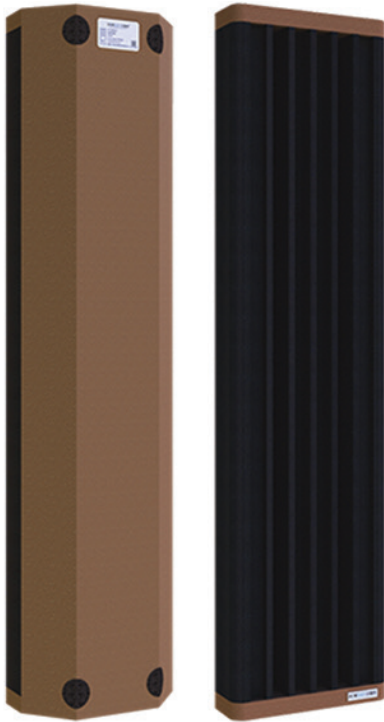




SPEKTRA

Q modular system





AVAILABLE COLORS:



PROPERTIES: HIGH FREQUENCY ABSORPTION

APPLICATION:

Controlling the reverberation time in HI-Fi listening rooms, home theaters, recording and broadcasting studios and other critical listening environments.

PRODUCT FEATURES:

Enjoy a clear, crisp sound without overhauling your room. These acoustic modular panels look professional and effectively tighten the sound in your room with its QRD array, that can absorb a broad-band of high frequencies. Combined with other DQ modules, it forms full spectrum acoustic treatment for your critical listening environment.

ENVIRONMENTALLY FRIENDLY BASE MATERIALS

Zero formaldehyde emission by International EO standards.

BASE MATERIAL:

High molecular polymer / Polyether polyol fire retardant acoustic foam

FRAME:

Anti-oxidization and anti-resonance treated aluminium fixing system

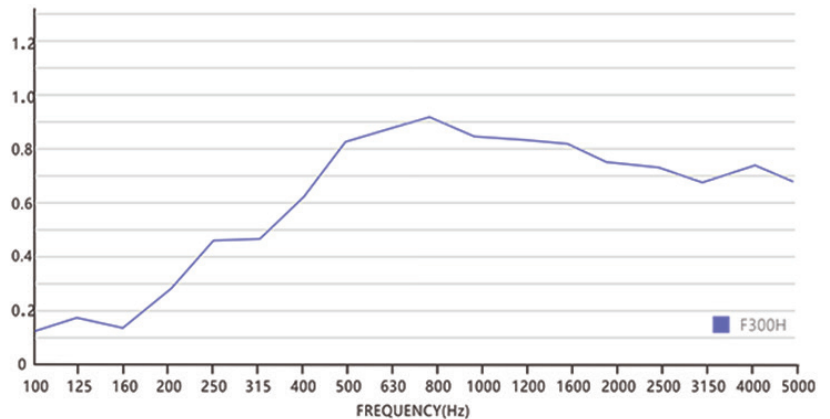
FINISH:

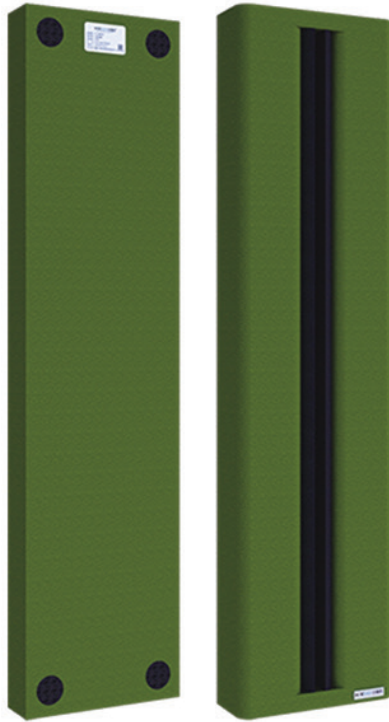
Eco-friendly (EO) water based paint

SIZE & WEIGHT:

1200mm (H) x 300mm (W) x 100mm (T), ≤1.3 kg/pc

ABSORPTION COEFFICIENT:





AVAILABLE COLORS:



PROPERTIES: MID FREQUENCY ABSORPTION

APPLICATION:

Controlling the reverberation time in HI-Fi listening rooms, home theaters, recording and broadcasting studios and other critical listening environments.

PRODUCT FEATURES:

Enjoy a clear, crisp sound without overhauling your room. These acoustic modular panels look professional and effectively tighten the sound in your room. It's tuned to be effective in mid-band 300-800Hz range. When combined with other DQ modules, it forms full spectrum acoustic treatment for your critical listening environment.

ENVIRONMENTALLY FRIENDLY BASE MATERIALS

Zero formaldehyde emission by International EO standards.

BASE MATERIAL:

High molecular polymer / Polyether polyol fire retardant acoustic foam

FRAME:

Anti-oxidization and anti-resonance treated aluminium fixing system

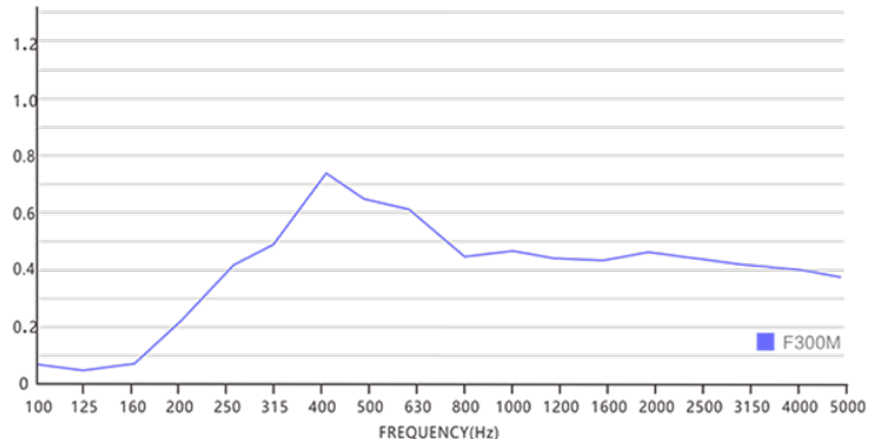
FINISH:

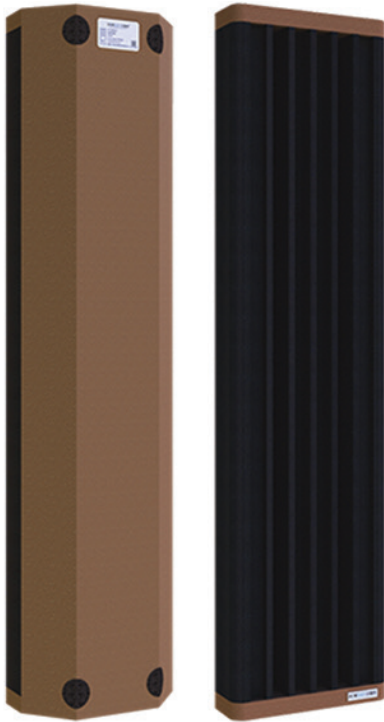
Eco-friendly (EO) water based paint

SIZE & WEIGHT:

1200mm (H) x 300mm (W) x 100mm (T), ≤1.6 kg/pc

ABSORPTION COEFFICIENT:





AVAILABLE COLORS:



PROPERTIES: LOW FREQUENCY ABSORPTION

APPLICATION:

Controlling the reverberation time in HI-Fi listening rooms, home theaters, recording and broadcasting studios and other critical listening environments.

PRODUCT FEATURES:

Enjoy a clear low frequency reproduction of your system, without overhauling your room. With QRD array and back cavity, it effectively tightens the sound in your room. Paired with other DQ modules, they form full spectrum acoustic treatment for your critical listening environment.

ENVIRONMENTALLY FRIENDLY BASE MATERIALS

Zero formaldehyde emission by International EO standards.

BASE MATERIAL:

High molecular polymer / Polyether polyol fire retardant acoustic foam

FRAME:

A half-concealed cavity structure filled with formed polymer material

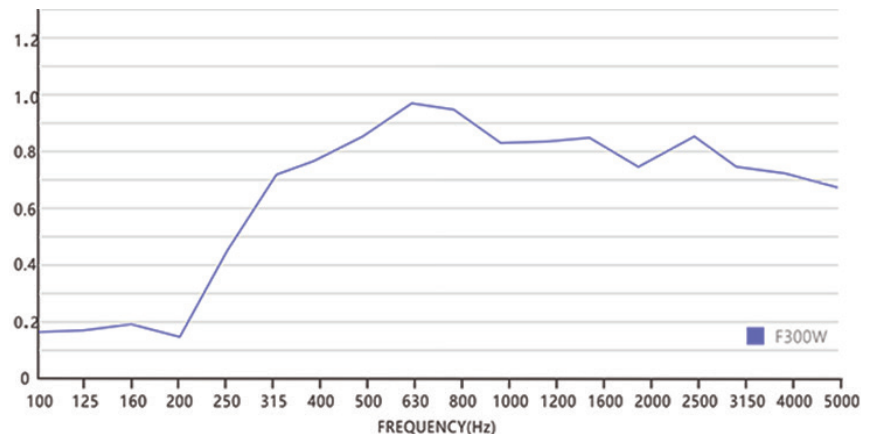
FINISH:

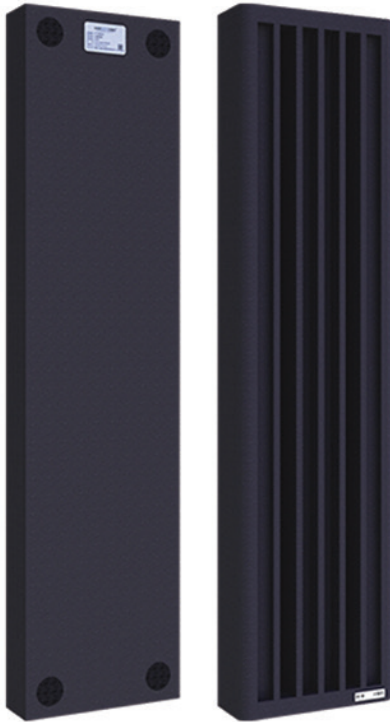
Eco-friendly (EO) water based paint

SIZE & WEIGHT:

1200mm (H) x 300mm (W) x 150mm (T), ≤1.6 kg/pc

ABSORPTION COEFFICIENT:





AVAILABLE COLORS:



PROPERTIES: FULL BAND FREQUENCY ABSORPTION

APPLICATION:

Controlling standing waves and room modes in HI-Fi listening rooms, home theaters, recording and broadcasting studios and other critical listening environments, where clear and coherent reproduction is required.

PRODUCT FEATURES:

Enjoy a clear, crisp sound without overhauling your room. These acoustic modular panels look professional and effectively tighten the sound in your room. It's tuned to be effective in mid-band 300-800Hz range. Combined with other DQ modules, it forms full spectrum acoustic treatment for your critical listening environment.

ENVIRONMENTALLY FRIENDLY BASE MATERIALS

Zero formaldehyde emission by International EO standards.

BASE MATERIAL:

High molecular polymer / Polyether polyol fire retardant acoustic foam

FRAME:

A half-concealed cavity structure filled with formed polymer material

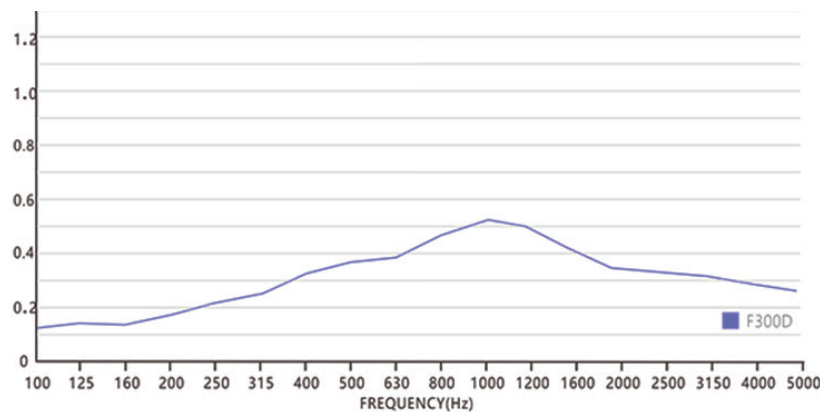
FINISH:

Eco-friendly (EO) water based paint

SIZE & WEIGHT:

1200mm (H) x 300mm (W) x 100mm (T), ≤1.6 kg/pc

ABSORPTION COEFFICIENT:



ABSORPTION



AVAILABLE COLORS:



PROPERTIES: LOW FREQUENCY ABSORPTION

APPLICATION:

Controlling the standing waves in HI-Fi listening rooms, home theaters, recording and broadcasting studios and other critical listening environments. Enjoy a clear low frequency reproduction of your system, without overhauling your room.

PRODUCT FEATURES:

With a high tensile inorganic coating, these corner bass traps are durable and effective at absorbing low-frequency standing waves. Paired with other DQ modules, they form full spectrum acoustic treatment for your critical listening environment.

ENVIRONMENTALLY FRIENDLY BASE MATERIALS

Zero formaldehyde emission by International EO standards.

BASE MATERIAL:

High molecular polymer

ACOUSTIC STRUCTURE:

High tensile inorganic coating with lightweight polymer materials, open resonance box, effective in capturing low frequencies between 80-200Hz. Standard anti-oxidization and anti-resonance treated aluminum fixing system.

FINISH:

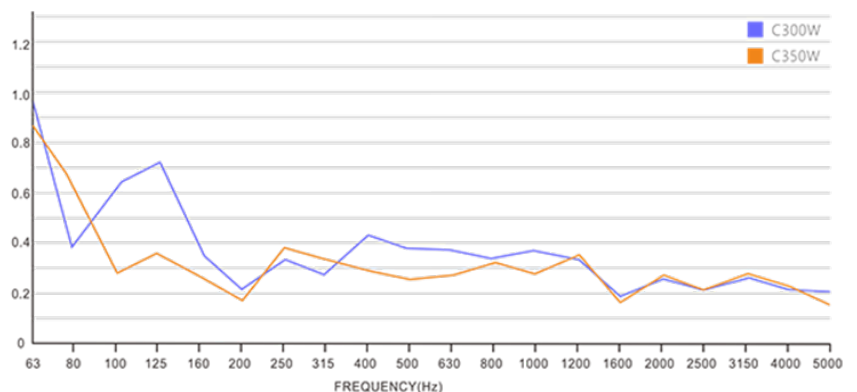
Eco-friendly (EO) water based paint

SIZE & WEIGHT:

R300W - fi=300 x 1200mm (H), ≤2.8 kg/pc

R350W - fi=300 x 1200mm (H), ≤3.5 kg/pc

ABSORPTION COEFFICIENT:



DQ CORNER BASSTRAP

DATA SHEET C300W / C350W

ABSORPTION

PROPERTIES: LOW FREQUENCY ABSORPTION

APPLICATION:

Controlling the standing waves in HI-Fi listening rooms, home theaters, recording and broadcasting studios and other critical listening environments. Enjoy a clear low frequency reproduction of your system, without overhauling your room.

PRODUCT FEATURES:

With a high tensile inorganic coating, these corner bass traps are durable and effective at absorbing low-frequency standing waves. Paired with other DQ modules, they form full spectrum acoustic treatment for your critical listening environment.

ENVIRONMENTALLY FRIENDLY BASE MATERIALS

Zero formaldehyde emission by International E0 standards.

BASE MATERIAL:

High molecular polymer

ACOUSTIC STRUCTURE:

High tensile inorganic coating with light polymer materials, open resonance box, effective in capturing low frequencies between 100-250Hz. Standard anti-oxidization and anti-resonance treated aluminum fixing system

FINISH:

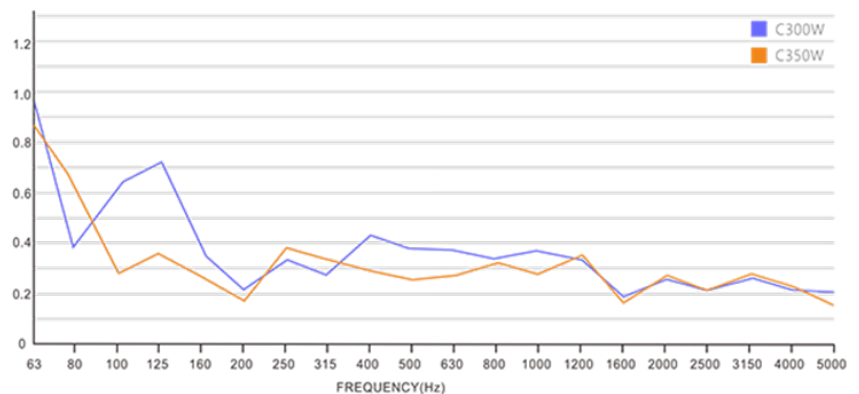
Eco-friendly (E0) water based paint

SIZE & WEIGHT:

C300W - 1200mm (H) x 300mm (W) x 300mm (T), ≤2.8 kg/pc

C350W - 1200mm (H) x 350mm (W) x 350mm (T), ≤3.2 kg/pc

ABSORPTION COEFFICIENT:



AVAILABLE COLORS:

